

### STEP 6: Follow on-screen setup

Follow the instructions on your TV screen. Activate your streaming player by using your computer or smartphone to link a Roku account.

#### IMPORTANT:

Roku never charges for activation support.

## Common questions

### Why do I need to create a Roku account?

You'll need a Roku account to stream, add channels, easily manage subscriptions, rent movies, and more.

### Why do I need to enter a credit card?

Saving a payment method makes it easy to rent or buy movies, subscribe to popular channels, and start free trials in just a click. No charges will be made without your authorization.

### What should I do if my streaming player is not connecting to my Wi-Fi® network?

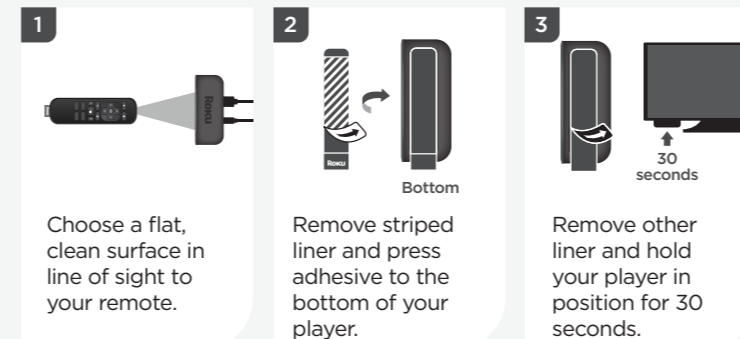
Double check the network you selected and that you entered your password correctly. If you have other devices connected to this network, your streaming player should connect.

Visit [go.roku.com/premiere](https://go.roku.com/premiere) for more information

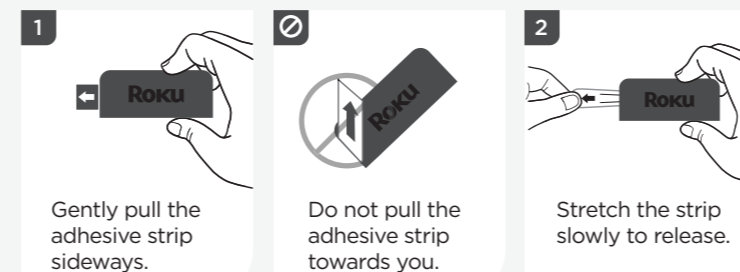
## Adhesive strip instructions

Use this removable strip if you want to attach your streaming player to your TV. Keep in mind that this strip can only be used once and your streaming player requires a direct line of sight to your remote control.

### To apply adhesive strip



### To remove adhesive strip



Need more help?

[support.roku.com](https://support.roku.com)



Video tutorials



Wi-Fi® help

Cut cable. Save money. Stream big.

[streamandsave.com](https://streamandsave.com)



Free TV



Live TV

See what's streaming for free, tips, and more

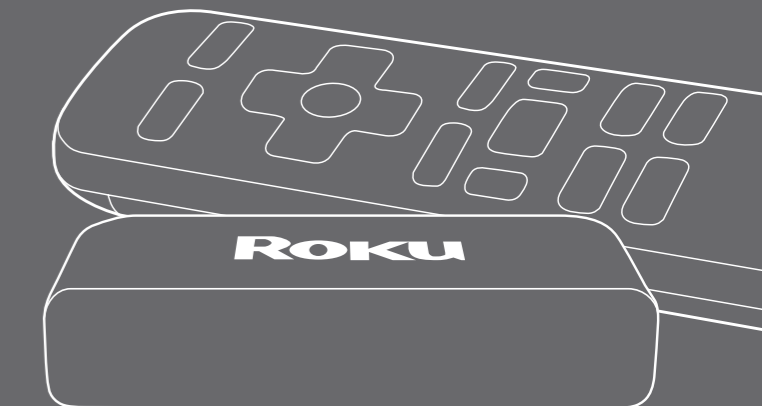
[roku.com/blog](https://roku.com/blog)

Follow us



**Roku**

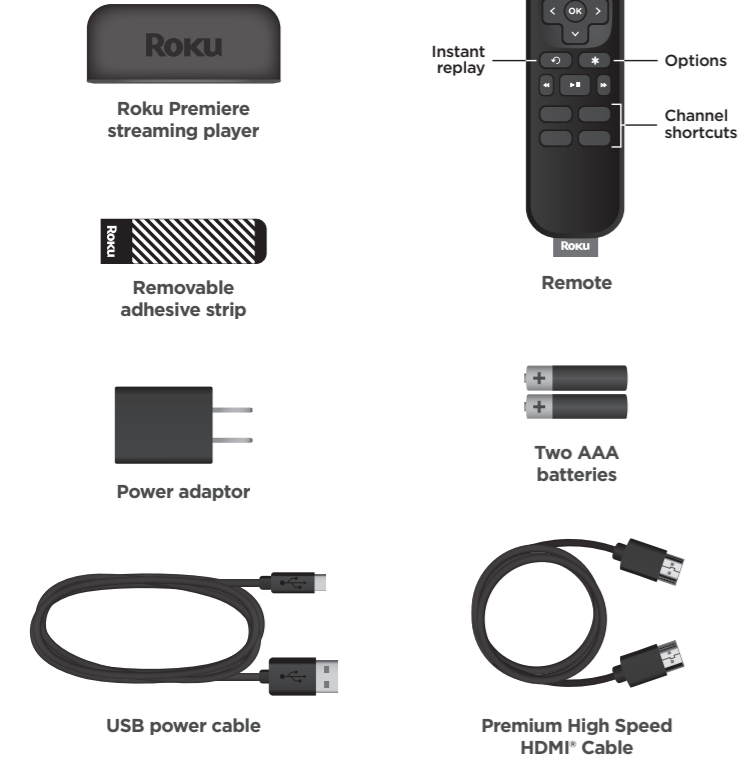
© 2023 Roku, Inc. All rights reserved. Roku and the Roku logo are the registered trademarks of Roku, Inc. All other logos and trademarks herein not owned by Roku, Inc. are the property of their respective owners.



# Roku Premiere

Quick Start Guide

## What's included



## Details



## Let's get started

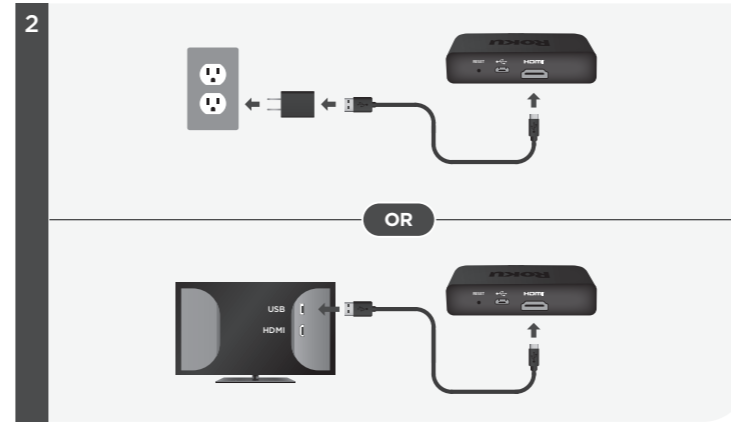


### STEP 1: Connect to TV

Connect your streaming player to an HDMI port on the back of your TV with the included cable.

#### TIP:

For help setting up your device, visit [go.roku.com/premiere](http://go.roku.com/premiere)



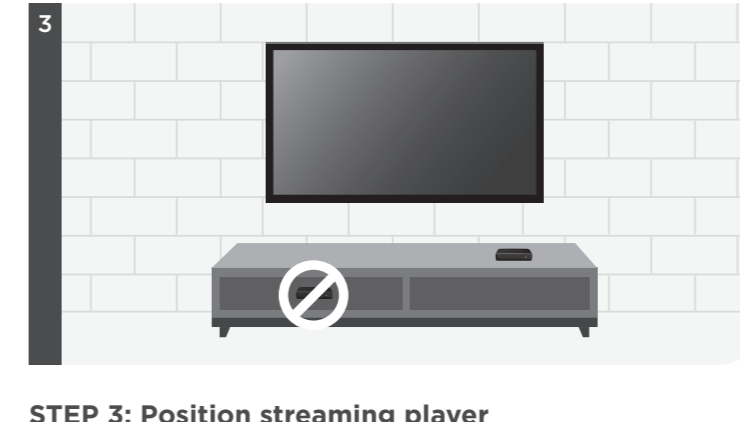
### STEP 2: Connect to power

For the best streaming experience, use the included USB power cable and power adaptor to connect your streaming player to a wall outlet.

Or use the included USB power cable to connect to the USB port on your TV.

#### NOTE:

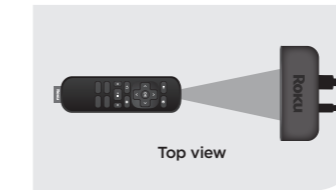
**See a red light on your streaming player?** That means the USB port on your TV is not providing enough power. Use the included power adaptor instead.



### STEP 3: Position streaming player

Place your streaming player near your TV or attach it with the included removable adhesive strip.

**DO NOT** place your streaming player behind the TV or inside a closed TV cabinet. Doing so may cause overheating.



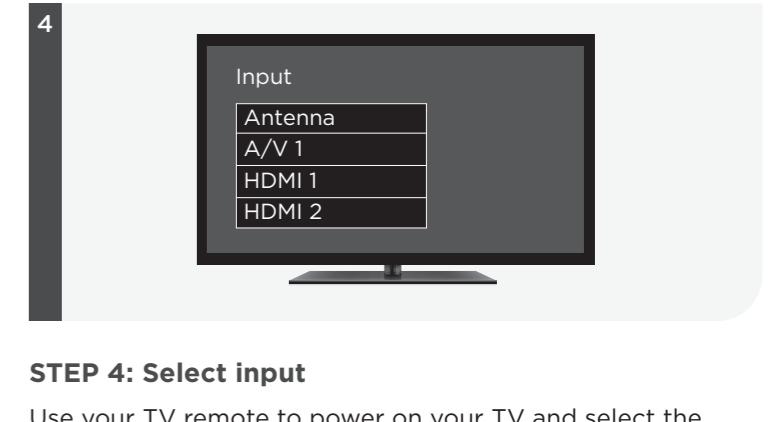
#### DO

Make sure that the front of your streaming player has direct line of sight to your remote control.



#### OPTIONAL

To attach your streaming player to your TV, see the **adhesive strip instructions** on the back page of this guide.



### STEP 4: Select input

Use your TV remote to power on your TV and select the input (source) you used to connect your streaming player.



### STEP 5: Insert batteries

Slide open the cover on the back of your remote and insert the included batteries.