

## Common questions

### What is HDMI-CEC?

Consumer Electronics Control (CEC) lets you control your TV's power with the Roku Streambar remote, so you don't have to juggle remotes.

### What is ARC?

Audio Return Channel (ARC) sends audio from your TV and all of your inputs to your Roku Streambar using the HDMI Cable. Connect your Roku Streambar to the HDMI port labeled "ARC" on your TV.

### Do I need to enable HDMI-CEC and ARC on my TV?

While some TVs automatically enable these features, others require you to enable them through the settings menu. TV manufacturers use different names for these settings, so refer to your TV manual or visit [go.roku.com/hdmihelp](http://go.roku.com/hdmihelp)

### Why do I need to create a Roku account?

You'll need a Roku account to stream, add channels, easily manage subscriptions, rent movies, and more.

### Why should I enter a credit card?

Saving a payment method makes it easy to rent or buy movies, subscribe to popular channels, and start free trials in just a click. No charges will be made without your authorization.

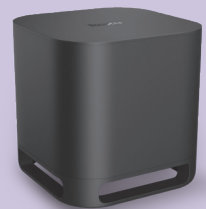
### Can I use the included voice remote to control my Roku TV™?

Yes, to learn how to pair the voice remote included with your Roku Streambar to your Roku TV, visit the link below.

Visit [go.roku.com/streambar](http://go.roku.com/streambar) for more information

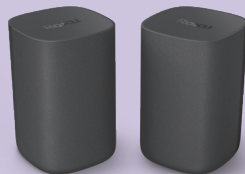
## Easily expandable

### Roku Wireless Subwoofer



Add even deeper, richer bass

### Roku Wireless Speakers



Add immersive surround sound

Sold separately.

## Tips and tricks

### Using Sound Settings

While streaming, press **\*** to view Sound Settings, like:

- **Volume Leveling**  
Helps keep your volume consistent and quiets loud commercials.
- **Speech Clarity**  
Improves clarity of voices so your favorite TV is easier to hear.
- **Night Mode**  
Lowers loud scenes while boosting quiet ones so you don't wake the house.

### Pairing a Bluetooth® device

- From the home screen, go to **Settings** and select **Remotes & devices**.
- Then choose **Pair Bluetooth device** and follow the instructions.

### Using voice commands

Press and hold the voice button and say things like:  
"Play classic rock on Pandora"  
"Set volume to 30"  
"Launch The Roku Channel"

## Roku

© 2020 Roku, Inc. All rights reserved. Roku, Roku TV, the Roku logo, and Streambar are the trademarks of Roku, Inc. Manufactured under license from Dolby Laboratories. Dolby, Dolby Audio, Pro Logic, and the double-D symbol are trademarks of Dolby Laboratories. The Bluetooth word mark and logos are registered trademarks owned by Bluetooth SIG, Inc. The terms HDMI and HDMI High-Definition Multimedia Interface, and the HDMI Logo are trademarks or registered trademarks of HDMI Licensing Administrator, Inc. in the United States and other countries. All other logos and trademarks herein not owned by Roku, Inc. are the property of their respective owners.

Need more help?  
[support.roku.com](http://support.roku.com)



Video  
tutorials



Wireless  
help

Cut cable.  
Save money.  
Stream big.

[streamandsave.com](http://streamandsave.com)



Free  
TV



Live  
TV

See what's  
streaming for free,  
tips, and more

Visit [blog.roku.com](http://blog.roku.com)

Follow us



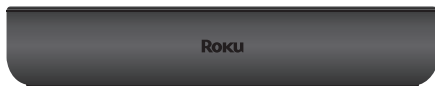
4100000641\_2

# Just wait until you hear this

## Roku Streambar™

### Quick Start Guide

## What's included



Roku Streambar



Remote



Two AAA Duracell batteries



**Optical cable (optional)**  
Only use if your TV does not have an HDMI-ARC port.

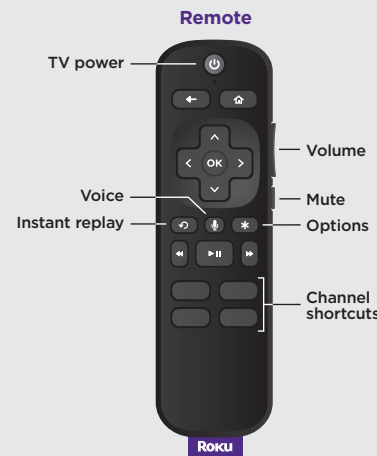


Power adaptor and cable

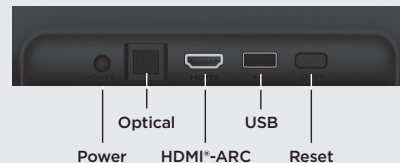


Premium High Speed HDMI Cable

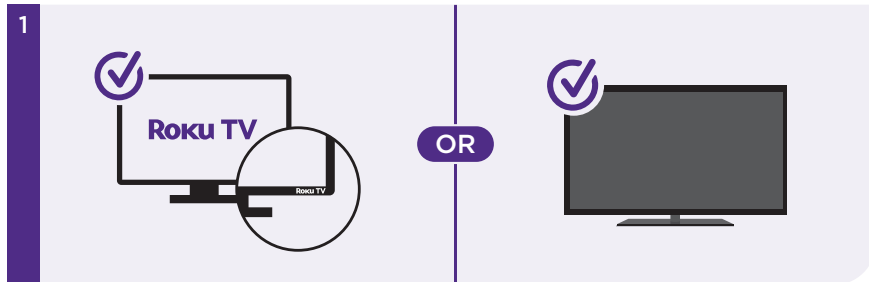
## Details



Back



## Let's get started



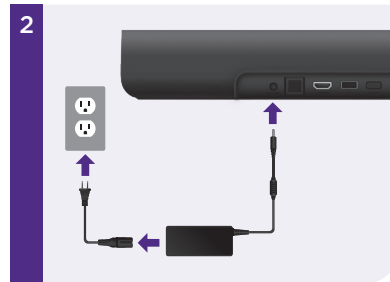
### STEP 1: Adjust TV settings

**Have a Roku TV?**  
Simply use the remote that came with your Roku TV and follow **steps 2 and 3**. The rest is automatic, even linking your Roku account.

### All other TVs

You may need to enable your TV's HDMI-CEC and ARC settings.

TV manufacturers use different names for these settings. For help, visit [go.roku.com/streambar](http://go.roku.com/streambar)

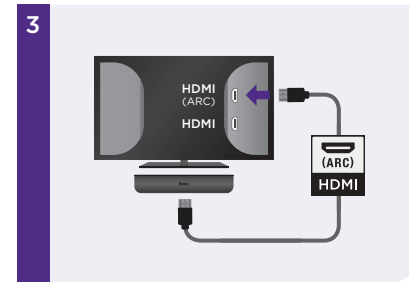


### STEP 2: Connect to power

Use the included power adaptor and cable to connect your Roku Streambar to a wall outlet.

#### TIP:

Place your Roku Streambar at the front edge of your TV stand for the best sound experience.



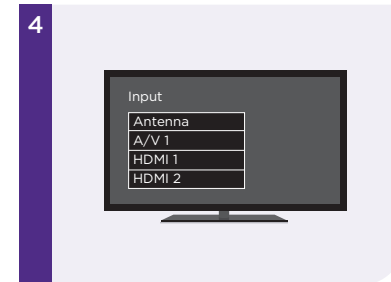
### STEP 3: Connect to TV

Connect your Roku Streambar to the HDMI® port on your TV labeled "ARC" with the included cable.



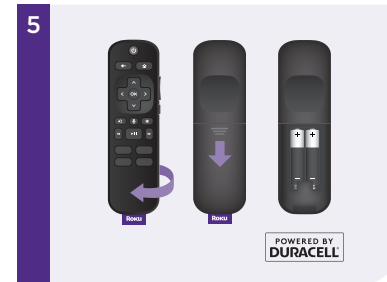
### Don't see an HDMI-ARC port?

Use the included optical cable along with the HDMI Cable to connect.



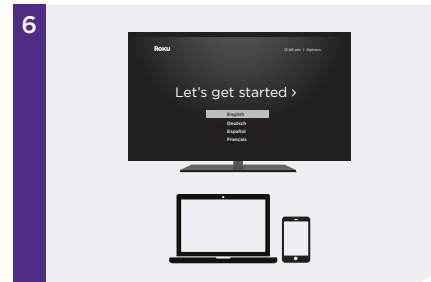
### STEP 4: Select input

Use the remote that came with your TV to select the HDMI® input (source) you used to connect your Roku Streambar.



### STEP 5: Insert batteries

Slide open the cover on the back of your remote and insert the included Duracell® batteries. Your remote will pair automatically.



### STEP 6: Follow on-screen setup

Follow the instructions on your TV screen. Activate your Roku Streambar by using your computer or smartphone to link to a Roku account.

#### IMPORTANT:

Roku does not charge for activation support – **beware of scams.**