



**For the best experience**

### Charge your camera before setup

**To charge camera:**

Plug the included USB cable into the micro USB port on the back of your camera and connect the other end to a standard USB port.

### What's included

- A** Roku Outdoor Camera\* with removable magnetic mounting base
- B** Camera charging USB cable
- C** 24mm M3 screws (x2)
- D** Drywall anchors (x2)

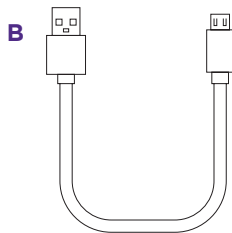
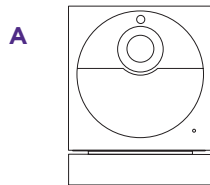
### What you'll need

- Phillips screwdriver
- Your smartphone

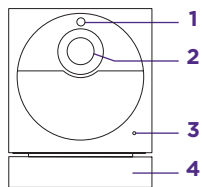
**NOTE:** You'll need to have a Roku Outdoor Camera base station set up before you set up your camera. Your base station can support multiple outdoor cameras.

Visit [go.roku.com/cameras](http://go.roku.com/cameras) for more information.

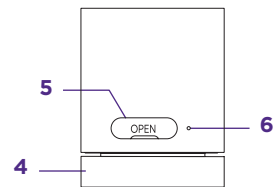
\* For outdoor use only.



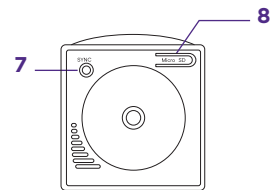
- 1** Light sensor
- 2** Lens
- 3** Microphone
- 4** Removable magnetic mounting base
- 5** On/off switch and USB charging port
- 6** Status light
- 7** Sync button
- 8** MicroSD slot  
(Card sold separately)



FRONT



BACK

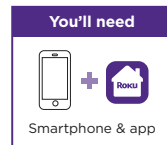


BOTTOM

### Let's get started

#### STEP 1: Open the Roku Smart Home app

Sign in with your Roku account.



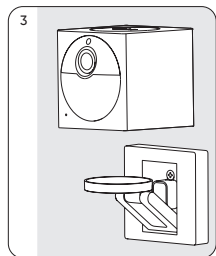
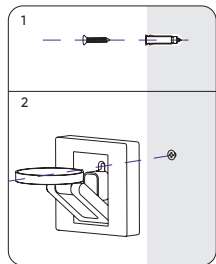
Messaging & data rates may apply.

#### STEP 2: Install your camera

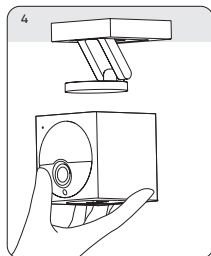
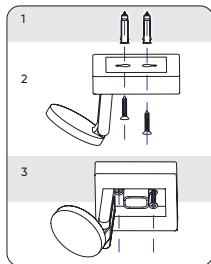
In the Roku Smart Home app, tap the "+" button, then **"Add Device"** to find **"Outdoor Camera."** Follow the instructions to finish setup.

Continue on back ➔

### WALL MOUNT



### CEILING MOUNT



### What's that light mean?

Status Light	Status
<b>YELLOW</b> - Solid	Powered on and beginning setup
<b>YELLOW</b> and <b>BLUE</b> - Flashing	Pairing to base station
<b>BLUE</b> - Flashing	Connecting to Wi-Fi®
<b>BLUE</b> - Solid	Connected and working
<b>RED</b> - Flashing	Charging
<b>RED</b> - Solid	Fully charged
<b>NO LIGHT</b>	Powered off or sleeping

Status lights are located on the camera and base station.



### More features are waiting

Unlock the full potential of your camera with a **Roku Smart Home Subscription.**

Learn more at [go.roku.com/rokusmarthome](https://go.roku.com/rokusmarthome)

### Need help?



Setup videos



Common questions



Tips and tricks

Visit

[go.roku.com/cameras](https://go.roku.com/cameras)

**Roku**

© 2023 Roku, Inc. All rights reserved. Roku, the Roku logo, and the Roku Smart Home logo are the trademarks or registered trademarks of Roku, Inc.



4100000973\_01

**Roku**  
Outdoor  
Camera

**Quick Start  
Guide**

