

# HIRO • Roku TV

## Quick Start Guide

---

### Need help?

For setup help or support,  
visit or call

[go.roku.com/hiro](https://go.roku.com/hiro)

**1-816-272-8106**

(4:00 am – 10:00 pm PT)



### HIRO

© 2025 Roku, Inc. All Rights Reserved. Roku, Roku TV, Hiro, the Hiro logo, and the purple d-pad are trademarks or registered trademarks of Roku, Inc.

Manufactured under license from Dolby Laboratories. Dolby, Dolby Audio, and the double-D symbol are registered trademarks of Dolby Laboratories Licensing Corporation. Confidential unpublished works. Copyright 1992-2019 Dolby Laboratories. All rights reserved.

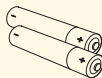
## What's included



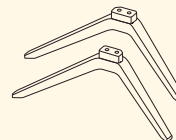
Hiro · Roku TV



Roku TV Remote



AAA Batteries



TV stands



Stand screws

## What you need



Phillips head  
screwdriver



Laptop or mobile  
phone for activation



Internet connection

## Roku TV remote features



### Sleep timer

Set and adjust scheduled shut-off times for your TV.



### Pre-set app shortcuts

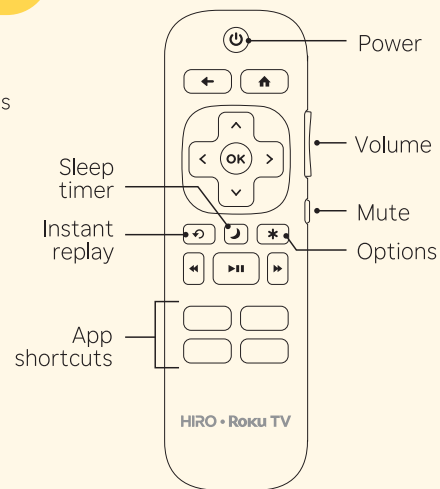
Launch popular streaming apps in just a press.



### Options button

**On the home screen:**  
Opens the app settings menu.

**While streaming:**  
Opens sound and picture settings.



## STEP 1: Set up your TV

### A Prepare a surface

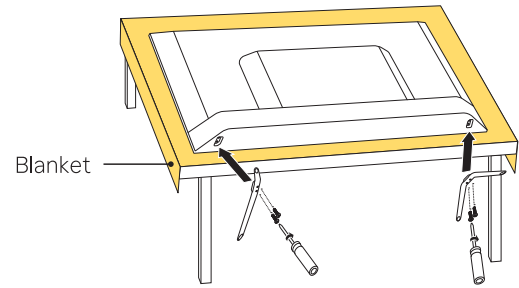
Put a soft covering like a blanket down onto a clean, flat surface (make sure it's larger than the TV) and place the TV on it.

### B Attach the stands

Use a screwdriver and included screws to attach the stands.

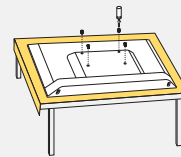
### C Set TV upright

Place your TV on a stable, flat surface.



## Mounting your TV?

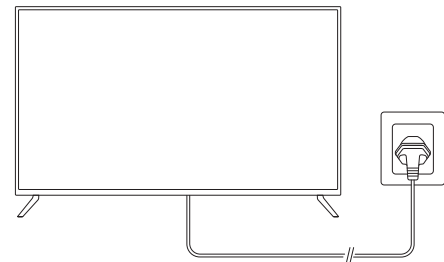
.....  
For instructions, skip these steps and visit [go.roku.com/TVmount](https://www.roku.com/TVmount)



## STEP 2: Plug TV in and power your remote

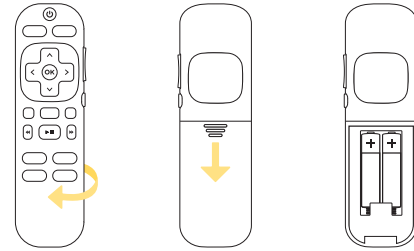
### A Connect your TV

Plug your TV into a power outlet. It should turn on automatically. If it doesn't, press the power button.



## **B** Power your remote

Slide open the cover on the back of your remote and insert the included batteries. You're ready to go.



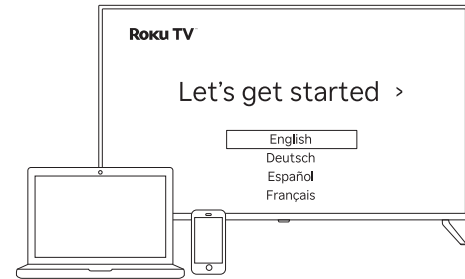
## **STEP 3: Activate your TV**

### **Connect your TV**

Follow the instructions on your TV screen. Activate your TV by using your computer or smartphone to link a Roku account.

### **! IMPORTANT**

Roku never charges for activation support.



## **Frequently asked questions**

### **Why do I need an internet connection?**

You'll need an internet connection to set up your TV, stream your favorite channels and for automatic software updates.

### Why should I enter a payment method?

Saving a payment method makes it easy to rent or buy movies, subscribe to popular channels, and start free trials in just a click. No charges will be made without your authorization.

---

## Common connectors and what they do

Between streaming, playing DVDs, and gaming, it's almost magical how much TVs can do. And these video connections make it all possible.

### Video connections



**HDMI** - Game consoles, DVD players



**Antenna/Cable** - Digital antenna, cable connection

### Audio connections



**HDMI ARC or eARC (recommended)** - AV receivers, soundbars



**Optical** - AV receivers, soundbars

### Other connections



**USB** - Flash drive



**Ethernet (available on some models)** - Wired internet connection